



AMC (UK) Fasteners Ltd
 Units 3 & 4, Darwin Road
 Willowbrook Industry
 Corby, NN17 5XZ

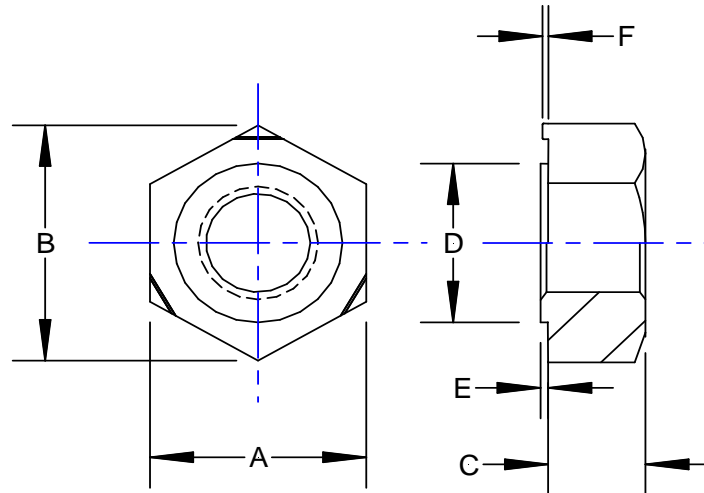
Part Numbers:

MC1**(size)010(Standard Collar)020(Deep Collar)

Hexagon Collared Weld Nuts

Dims: Conform to BLS.06.02

Material: Forged from steel to
 BS EN10263



Dimensions in mm

Nom Size	A Max	B Max	C Max	D max	E Max		F Max
					Std	Deep	
M5 x .8 10 UNF	11.3	13.0	4.5	8.05	.81	1.07	.51
M6 x 1 1/4 UNF M7 x 1	13.33	15.4	5.7	9.63	.81	1.14	.51
M8 x 1.25 5/16 UNF	15.24	17.6	6	12.02	1.02	1.4	.69
M10 x 1.5 3/8 UNF	18.03	20.8	7.3	14.38	1.22	1.47	.89
7/16 UNF	20.8	24	8.3	16	1.22	1.6	1.04
M12 x 1.75 1/2 UNF	22.2	25.6	10.9	17.4	1.42	1.8	1.24

The standard collar weld nut is the most widely used type and is suitable for welding sheet metal from 20 SWG(0.914mm) to 18 SWG(1.219mm) thick. They can also be used on thicker sheets but where holes are surrounded by a depression deep collar weld nuts may be required. Deep collar weld nuts are often used on sheet metal from 16 SWG(1.626mm) to 8 SWG(4.064mm). These weld nuts can be welded on any standard projection welding machine of sufficient capacity but it is essential to ensure that the locating collar will not protrude through the sheet after welding. Both types are available in UNF and ISO metric coarse thread. UNC and ISO metric fine threads are available on request.